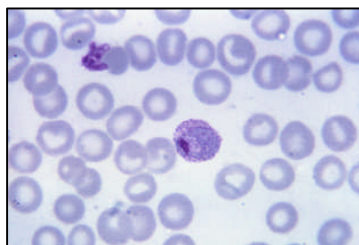


## **Plasmodium pan species LDH (Malaria) Monoclonal Antibody**

Plasmodium vivax trophozoite  
In Giemsa stained blood smear  
(courtesy CDC).



CATALOG NUMBER:	M300
PRODUCT DESCRIPTION:	Mouse Monoclonal anti- <u>Plasmodium</u> pan species LDH (lactate dehydrogenase).
SPECIFICITY:	Reacts with Lactate Dehydrogenase from <u>Plasmodium</u> pan species.
IMMUNOGEN:	Native <u>Plasmodium vivax</u> LDH enzyme.
APPLICATIONS:	Suitable for use in ELISA or lateral flow applications.
PURIFICATION:	Protein A chromatography.
IMMUNOGLOBULIN ISOTYPE:	IgG <sub>1</sub>
BUFFER:	Supplied in 0.01 M PBS, pH 7.3, with 0.05% sodium azide added as preservative.
PAIRING INFORMATION:	We recommend pairing <u>Plasmodium</u> LDH monoclonal M300 with <u>Plasmodium</u> LDH monoclonal M301.
STORAGE:	Store antibody at 2-8°C or 20°C. Avoid freeze-thaw cycles.
INTENDED USE:	For Research Use Only. Not intended for diagnostic use. Suitable for use in immunoassay development or other applications.