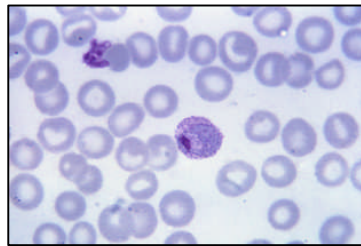


Plasmodium pan species LDH (Malaria) Monoclonal Antibody

Plasmodium vivax trophozoite
in Giemsa stained blood smear
(Courtesy CDC).



CATALOG NUMBER:	M301
PRODUCT DESCRIPTION:	Mouse Monoclonal anti- <u>Plasmodium</u> sp. (Malaria) LDH (lactate dehydrogenase)
SPECIFICITY:	Reacts with Lactate Dehydrogenase from <u>Plasmodium</u> pan species.
IMMUNOGEN:	Native <u>Plasmodium vivax</u> LDH enzyme.
APPLICATIONS:	Suitable for use in ELISA or lateral flow applications.
PURIFICATION:	Protein A chromatography.
IMMUNOGLOBULIN ISOTYPE:	IgG ₁
BUFFER:	Supplied in 0.01 M PBS, pH 7.3, with 0.05% sodium azide added as preservative.
PAIRING INFORMATION:	We recommend pairing <u>Plasmodium</u> LDH monoclonal M301 with <u>Plasmodium</u> LDH monoclonal M300.
STORAGE:	Store antibody at 2-8°C or 20°C. Avoid freeze-thaw cycles.
INTENDED USE:	For Research Use Only. Not intended for diagnostic use. Suitable for use in immunoassay development or other applications.